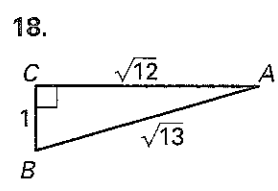
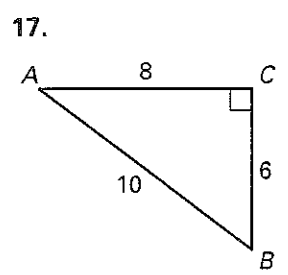
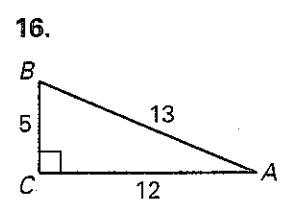
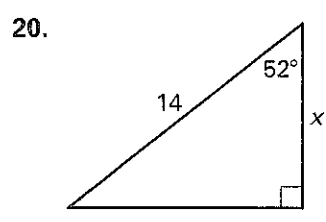
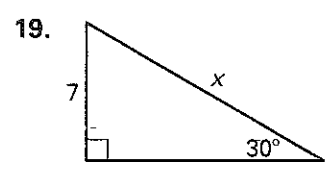


Chapter Test B
For use after Chapter 9

Find the sine, the cosine, and the tangent of the acute angle **A** of the triangle. Express each value as a decimal rounded to four places.

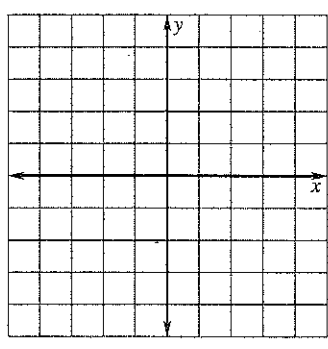


Use trigonometric ratios to find the value of each variable. Round decimals to the nearest tenth.



Draw vector \vec{PQ} in a coordinate plane. Write the component form of the vector and find its magnitude. Round decimals to the nearest tenth.

- 21. $P(0, 0), Q(5, 3)$
- 22. $P(-1, 0), Q(4, -5)$
- 23. $P(2, -5), Q(-2, -5)$
- 24. $P(-3, -3), Q(5, 0)$



Let $\vec{u} = \langle 1, 6 \rangle$, $\vec{v} = \langle -1, 6 \rangle$, $\vec{w} = \langle 3, 5 \rangle$, and

$\vec{z} = \langle -5, -7 \rangle$. Find the given sum.

- 25. $\vec{v} + \vec{w}$
- 26. $\vec{u} + \vec{z}$
- 27. $\vec{v} + \vec{z}$
- 28. $\vec{w} + \vec{z}$
- 29. $\vec{u} + \vec{v}$
- 30. $\vec{u} + \vec{w}$

- 16. a. _____
- b. _____
- c. _____
- 17. a. _____
- b. _____
- c. _____
- 18. a. _____
- b. _____
- c. _____
- 19. _____
- 20. _____
- 21. _____
- 22. _____
- 23. _____
- 24. _____
- 25. _____
- 26. _____
- 27. _____
- 28. _____
- 29. _____
- 30. _____

Review and Assess