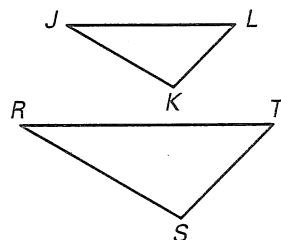


**Practice B**

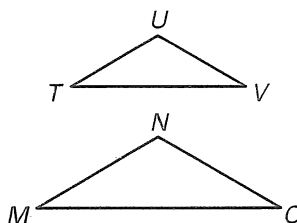
For use with pages 473-479

List all pairs of congruent angles and write the statement of proportionality for the figures.

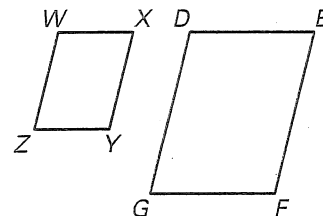
1.  $\triangle JKL \sim \triangle RST$



2.  $\triangle TUV \sim \triangle MNO$

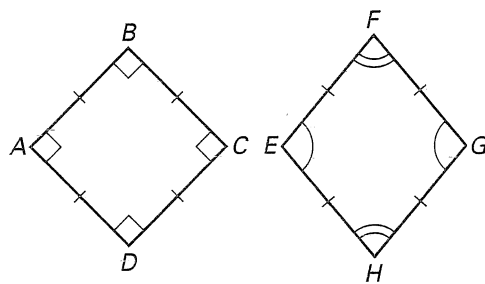


3.  $\square WXYZ \sim \square DEFG$

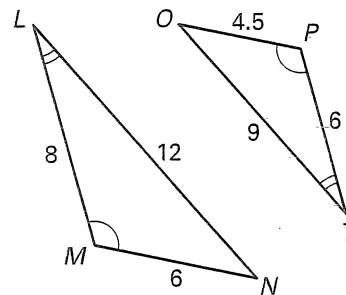


Decide whether the polygons are similar. If so, write a similarity statement.

4.

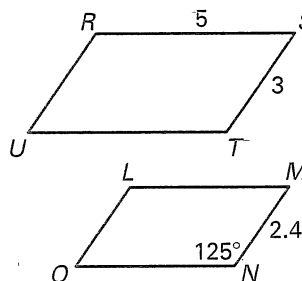


5.



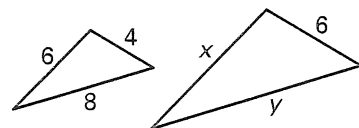
In the diagram at the right,  $\square RSTU \sim \square LMNO$ .

6. Find the scale factor of  $\square RSTU$  to  $\square LMNO$ .
7. Find the scale factor of  $\square LMNO$  to  $\square RSTU$ .
8. Find the length of  $\overline{NO}$ .
9. Find the measure of  $\angle U$ .
10. Find the perimeter of  $\square LMNO$ .
11. Find the ratio of the perimeter of  $\square RSTU$  to the perimeter of  $\square LMNO$ .

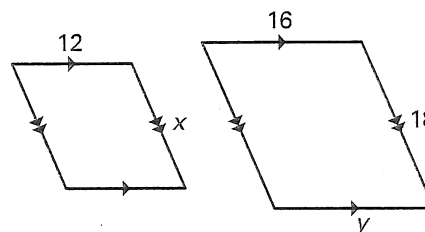


The two polygons are similar. Find the values of  $x$  and  $y$ .

12.



13.



14. The ratio of one side of  $\triangle ABC$  to the corresponding side of similar  $\triangle DEF$  is 3:5. The perimeter of  $\triangle DEF$  is 48 inches. What is the perimeter of  $\triangle ABC$ ?