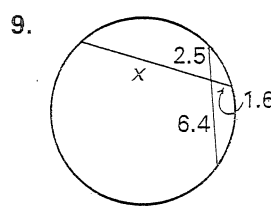
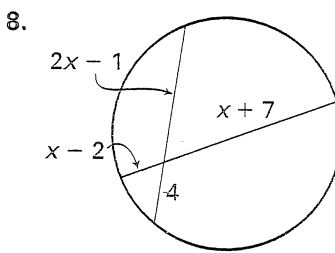
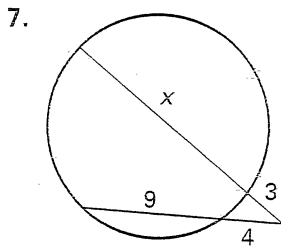
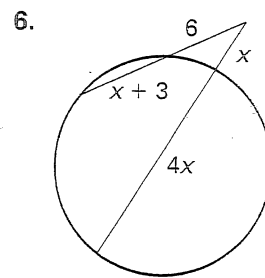
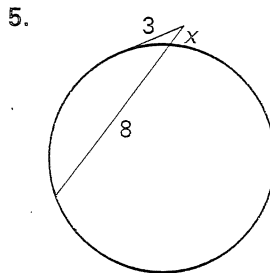
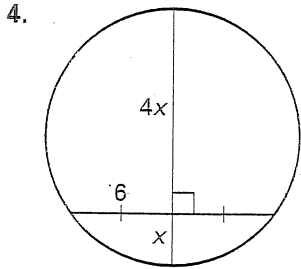
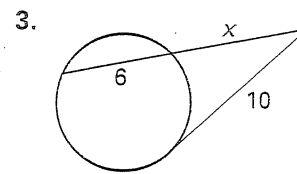
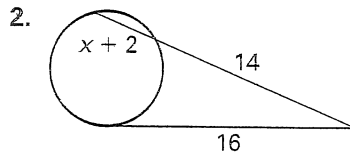
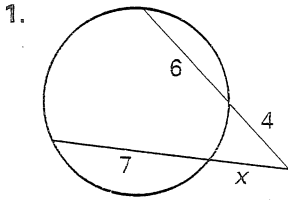


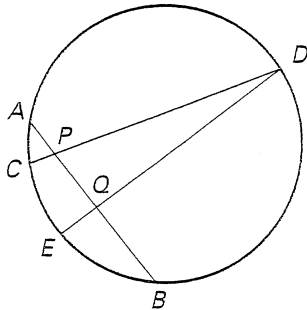
Practice C

For use with pages 629–635

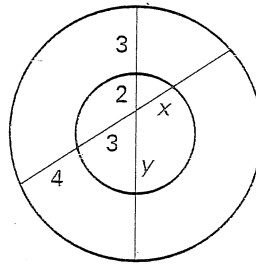
Find the value of x . Round decimal answers to the nearest tenth.



10. Given: $AP = 3$, $PQ = 5$, $QB = 7$
 $CP = 2$, and $QD = 14$
 Find: PD and EQ



11. Can Theorem 10.15 be used to solve for x and y in the concentric circles below? Explain why or why not.



- 12 *Satellite* A satellite is orbiting approximately 100 miles above Earth. The furthest site that the satellite is able to take a photo of Earth is located at tangency point B . If Earth's diameter is approximately 8000 miles, what is the distance from the satellite to point B ?

